

The background features a stylized illustration of a wine glass and two clusters of grapes. The glass is filled with a pinkish-red liquid and is outlined in dark blue. The grapes are represented by circles in various colors: pink, orange, and brown. The entire scene is set against a background of overlapping blue, green, and yellow shapes, creating a vibrant, abstract composition.

**DOC WINES**

ITALIAN EXCELLENCES  
IN USA AND MEXICO

THIRD SEASON

FEDER  CC

# **FEDERDOC. SINCE 1979 SERVING THE CONSORTIA.**

Federdoc is the National Confederation of Voluntary Consortia for the Protection of the Designations of the Italian Wines. Established in 1979, this organization represents almost all the universe of the Italian Designations and their Consortia. Every day Federdoc represents and supports them on an institutional, legal and legislative level. Throughout the year promotes the protected names with information and promotion campaigns in Europe and worldwide.

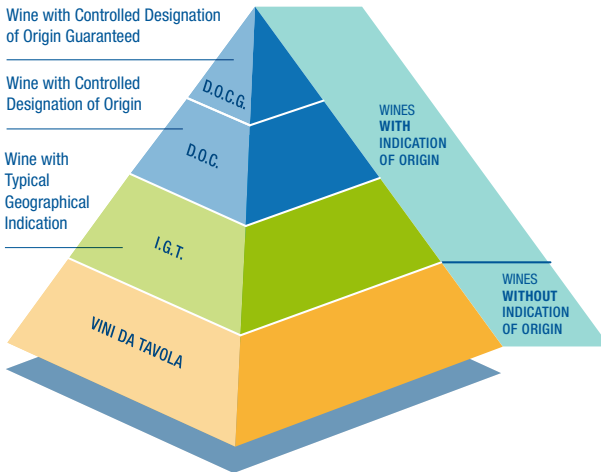
**Federdoc: “the designation of origin”  
of Italian consortia.**



# INDEX

<b>THE PYRAMID OF ITALIAN WINES</b> .....	<b>4</b>
<b>THE LABEL OF WINES WITH DESIGNATION OF ORIGIN</b> .....	<b>10</b>
<b>THE NUMBERS OF THE D.O.C.G., D.O.C. (P.D.O.) AND I.G.T. (P.G.I.) IN ITALY</b> .....	<b>14</b>
<b>DESIGNATIONS OF ORIGIN OF THE ITALIAN WINES: PRODUCTION AREAS</b> .....	<b>17</b>
PIEDMONT "ASTI AREA" .....	18
PIEDMONT "LANGHE AREA" .....	19
PIEDMONT "MONFERRATO AREA" .....	20
PIEDMONT "NORTH" .....	21
LOMBARDY .....	22
AOSTA VALLEY .....	23
TRENTINO-ALTO ADIGE .....	24
FRIULI VENEZIA GIULIA .....	25
VENETO .....	26
EMILIA ROMAGNA .....	28
LIGURIA .....	29
TUSCANY "ANTIQUE HEART" .....	30
TUSCANY .....	31
MARCHES .....	32
UMBRIA .....	33
LATIUM .....	34
MOLISE .....	35
ABRUZZO .....	36
CAMPANIA .....	37
BASILICATA .....	38
APULIA .....	39
CALABRIA .....	40
SICILY .....	41
SARDINIA .....	42

# THE PYRAMID OF ITALIAN WINES (UNTIL 2009)



4

## “Vini da tavola”

At the base of the pyramid there are “Vini da tavola”. These are products that are produced without any reference to a territory or geographical area. These wines don’t have any specific qualitative characteristics, but it doesn’t mean that they are of low quality or that they aren’t genuine.

In addition to the denominations that derive from the color (e.g. white, red, rosé) the year of production is sometimes displayed on the label. In the absence of other specifications, it could be that it is a simple product which is the result of the union of different grape varieties or wineries from different geographical areas.

## I.G.T. wines

On the second to last level of the pyramid there are the “Indicazione Geografica Tipica or I.G.T.” (Typical Geographical Indication) wines.

The main features of an I.G.T. wine are the geographical area from which it originated (for example Latium or Veneto), the base grape variety (for example Chardonnay) and the vintage year.

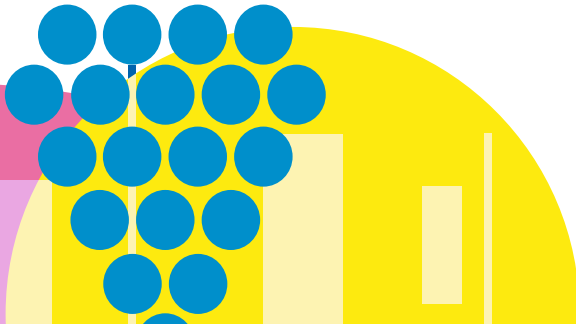
At least 85% of these wines are named after the geographical area they derived from. Finally, I.G.T. wines must meet certain parameters that are indicated by production regulations, such as:

- the maximum yield of grapes per hectare;
- the transformation yield of grapes into wine;
- the minimum natural alcoholic proof;
- the alcoholic strength for consumption;
- the vines from which they can be obtained.

## D.O.C. wines

One step higher in the pyramid we find the “Denominazione di Origine Controllata or D.O.C.” (Registered Designation of Origin) wines. They are produced in a bordered land area with precise chemical and organoleptic features, that are determined in the manufacturing rules beforehand.

5



These rules specify the types of wine that can be produced (such as Rosso Riserva, or Vendemmia Tardiva), the quantities of grapes that can be obtained per hectare of vineyards, the varieties that can be used, the yield of transformation from grapes into wine, the minimum natural alcoholic strength and consumption, and the type and duration of the aging process. Practically the entire production cycle (from the vineyard to the bottle) must respect the production rules. Unlike the previous categories D.O.C. wines are also controlled qualitatively.

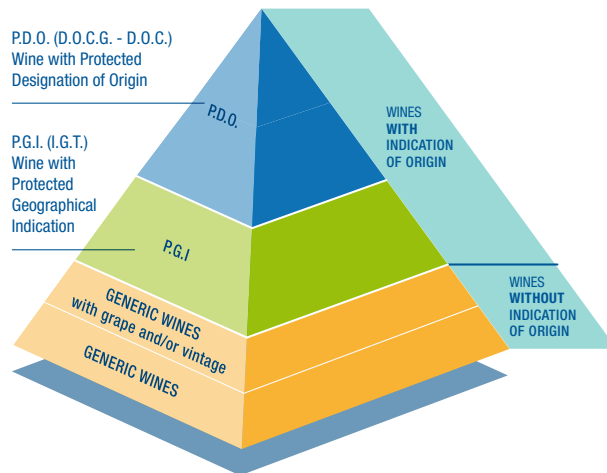
Before being put on the market they must undergo chemical-physical and organoleptic analyses in order to ensure their compliance with the parameters that are set in the product description.

### D.O.C.G. wines

On top of the pyramid we find the “Denominazione di Origine Controllata e Garantita or D.O.C.G.” (Denomination of Controlled and Guaranteed Origin) wines. The naming D.O.C.G. is reserved for wines of great value, with high intrinsic qualities, that are also defined by natural, human, and historical factors that have gained commercial value and acclaim both nationally and internationally.

These wines are subjected to stricter production guidelines and have more restrictive production regulations than D.O.C. wines. Before being recognized as D.O.C.G. these wines should have been among D.O.C. wines for at least five years. The law also establishes that the product cannot be distributed if it exceeds the maximum capacity of five liter containers. Each bottle must also be equipped with a label bearing an alphanumeric code that is issued by the state. This label is assigned to the bottlers and must be applied on every single bottle produced.

## THE NEW PYRAMID OF ITALIAN WINES (FROM AUGUST 1ST, 2009)



### **Generic wines (with the possibility of indicating vintage and/or grape)**

These are wines with no origin indication that can be produced with grapes from different areas and/or from different Member States. Their label they can show a reference to the vintage and/or the variety of grapes used. The indication on the label of the wine is limited to only a few varieties: Cabernet, Cabernet Franc, Cabernet Sauvignon, Chardonnay, Merlot, Sauvignon, Syrah.

### **I.G.P. (P.G.I.) Protected Geographical Indication**

It indicates the name of a region, a specific place or, in exceptional cases, a country that is used to describe a wine variety (that comes from that region, specific place or country) which possesses a specific quality, reputation, or other characteristics that are attributable to that geographical origin. At least 85% of the grapes that are used to make these wines come from this geographical area. For wines with P.G.I., the demarcation of the wine-making grapes has been introduced. This means that it will no longer be possible to produce a wine with P.G.I. from grapes that are harvested in a region, but vinified in another (except for the 15% of the grapes that can come from outside the area). In addition to that, P.G.I. wines will be subjected to more stringent control procedures.

### **D.O.P. (P.D.O.) Protected Designation of Origin**

Indicates the name of a region, a specific place or, in exceptional cases, a country that is used to describe a wine variety (that comes from that region, specific place or country) whose quality or characteristics are essentially or exclusively due to the geographical environment including its natural and human factors. The grapes that are used to make a D.O.P wine are 100% produced, processed and prepared in the stated geographical area.



To learn about the evolution of the pyramid of Italian wines from 1861 to today, go to:  
[www.federdoc.com/en/the-pyramid-of-italian-wines/](http://www.federdoc.com/en/the-pyramid-of-italian-wines/)



In derogation to the provisions of E.C. Regulations, Member States may continue to use their traditional names that refer to Appellations of Origin and Geographical Indications.

You may continue to use (at least in Italy) acronyms such as:



DOCG



DOC



IGT

# THE LABEL OF WINES WITH DESIGNATION OF ORIGIN

The label applied on a bottle can be regarded as the identity card of the wine, and therefore must contain precise details and illustrations specially designed to help the consumer understand the true nature of the product it refers to.

The label therefore takes an important significance since it determines the first contact of the consumer with the wine. In fact, in current commercial reality, the only message that the bottler may get to those who will drink the product consists of the information provided on the label.

The label thus transmits a whole series of important information about the wine and its characteristics. The information must be clear, complete, and verifiable. The European Community issued in this regard a series of precise rules in order to create a uniform legislation on a European level. The E.C. legislation brings together wines with D.O.C. and D.O.C.G. labels under the acronym D.O.P. (P.D.O. - Protected Designation of Origin).

10



11

### **1. The Designation of Origin mention**

It specifies the proper Designation of Origin type, as indicated in the related Production Regulations.

### **2. Specific traditional mentions D.O.C. or D.O.C.G. (P.D.O.)**

The expressions "Controlled Designation of Origin" (D.O.C.) or "Controlled and Guaranteed Designation of Origin" (D.O.C.G.) indicate those excellent wines which have been produced in compliance with strict regulations that guarantee top quality.

This information may be accompanied (or replaced by) the acronym D.O.P. (P.D.O. - Protected Designation of Origin) which defines, at European level, the Wines with Designation of Origin.

### **3. Nominal volume of wine**

The nominal volume of wine must be stated in litres, centilitres, or millilitres.

### **4. Vintage**

Starting from the 2010 harvest, the indication of the year is mandatory for all D.O.C.G. and D.O.C. wines, except for sparkling, fizzy, and fortified wine types.

### **5. Indication of the bottler or producer**

The company name of the corresponding bottler must always be specified. As for sparkling wines, the producer or retailer name may replace the bottler one. The bottler company name (or the producer/retailer one, in the allowed cases), must appear together with the name of the municipality where the production plant is located and its home Member State (Italy).

### **6. Indication of origin**

The term "produced in" (or equivalent terms such as "wine of", "product of", etc.) followed by the name of the Member State, indicates the area where the grapes were harvested and vinified.

### **7. Indication of the batch**

Numbering that indicates a set of bottles belonging to the same lot or parcel, produced in virtually identical circumstances. As a rule, it is usually preceded by the letter "L".

### **8. Contains sulphites**

It indicates that the product has been treated with allergens such as sulphur dioxide.

This statement is mandatory when the sulphite content exceeds 10 mg/litre.

### **9. Actual alcoholic strength**

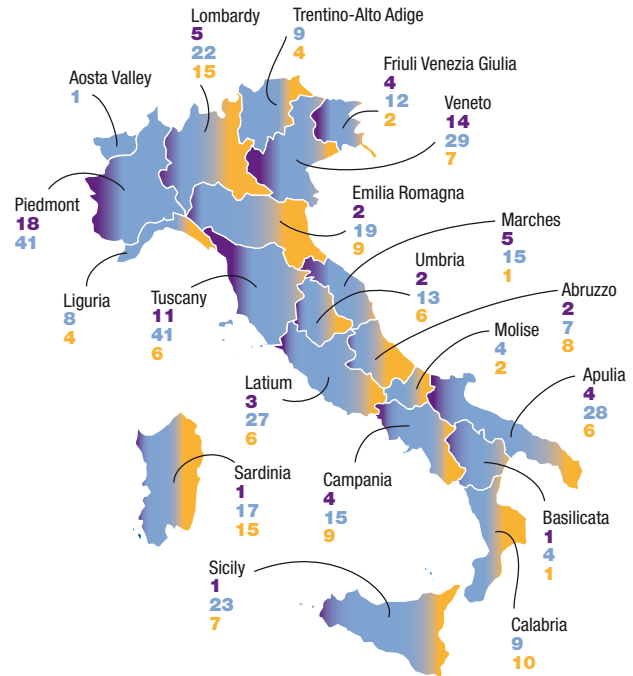
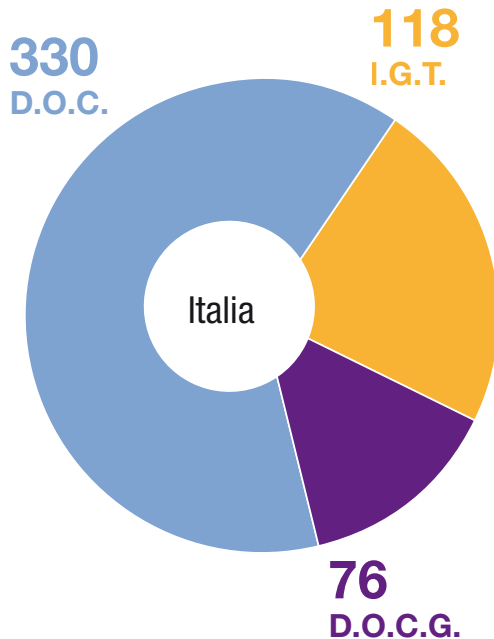
The alcohol content must be expressed in units or half units of percentage by volume (e.g. 10% vol., 10.5% vol.) and may be preceded by the wording "actual alcoholic strength" or "actual alcohol" or just by the abbreviation "alc".

All mandatory information must appear either on the front or on the back (it's essential they appear in the same visual field), except for the year, the indication of the batch, and the sulphites information which may also appear on the other side.





# THE NUMBERS OF THE D.O.C.G., D.O.C. (P.D.O.) AND I.G.T. (P.G.I.) IN ITALY



N.B. The total of some regions includes interregional D.O. and I.G.  
Therefore, their sum may not correspond to the total of the national D.O. and I.G.

I.G.T. D.O.C. D.O.C.G.



## DESIGNATIONS OF ORIGIN OF THE ITALIAN WINES: PRODUCTION AREAS.

Wines with Designation of Origin, are wines from a specified geographical area of origin produced according to the rules laid down in the product specifications.

Before being marketed, these wines must be subjected to a preliminary chemical-physical and organoleptic analysis that certifies their compliance with the requirements of the specifications themselves. All this, to ensure the quality of the product and to protect consumers.

This booklet contains all the Italian regions, with the geographical areas that correspond to the different designations of origin of wines. Data and maps are updated to March 31, 2022.

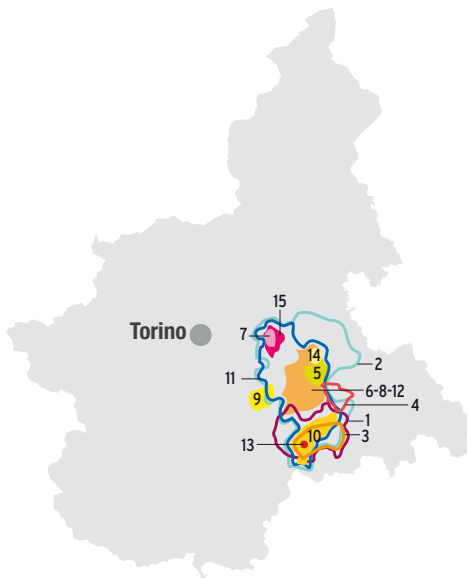
## PIEDMONT "ASTI AREA"

### D.O.C.G.

Asti .....	1
Barbera d'Asti .....	2
Brachetto d'Acqui or Acqui .....	3
Nizza .....	4
Ruché di Castagnole Monferrato ..	5
Terre Alfieri .....	6

### D.O.C.

Albugnano .....	7
Calosso .....	8
Cisterna d'Asti .....	9
Dolcetto d'Asti .....	10
Freisa d'Asti .....	11
Grignolino d'Asti .....	12
Loazzolo .....	13
Malvasia di Casorzo d'Asti or Casorzo .....	14
Malvasia di Castelnuovo Don Bosco .....	15



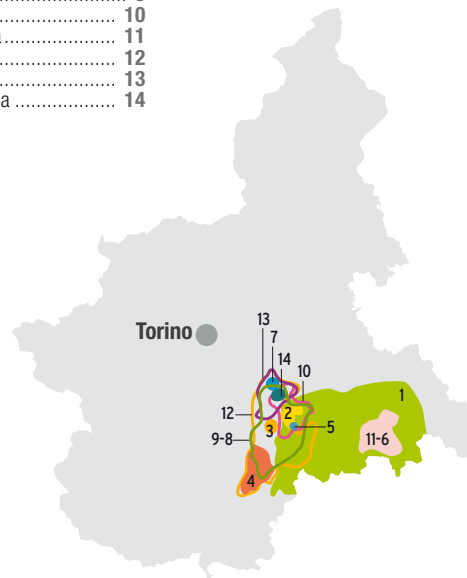
## PIEDMONT "LANGHE AREA"

### D.O.C.G.

Alta Langa .....	1
Barbaresco .....	2
Barolo .....	3
Dogliani .....	4
Dolcetto di Diano d'Alba or Diano d'Alba .....	5
Dolcetto di Ovada Superiore or Ovada .....	6
Roero .....	7

### D.O.C.

Alba .....	8
Barbera d'Alba .....	9
Dolcetto d'Alba .....	10
Dolcetto di Ovada .....	11
Langhe .....	12
Nebbiolo d'Alba .....	13
Verduno Pelaverga .....	14



## PIEDMONT "MONFERRATO AREA"

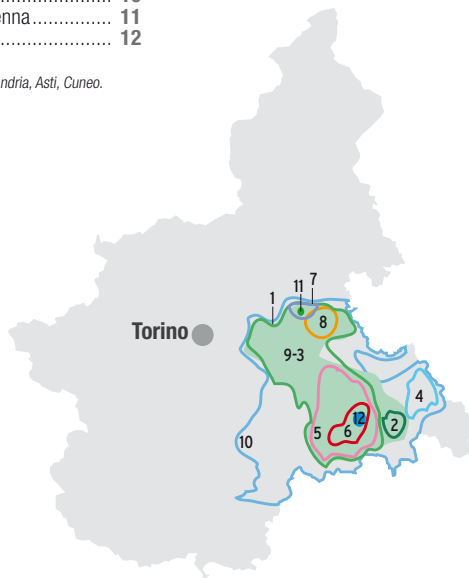
### D.O.C.G.

- Barbera del Monferrato Superiore ..... 1
- Gavi or Cortese di Gavi ..... 2

### D.O.C.

- Barbera del Monferrato ..... 3
- Colli Tortonesi ..... 4
- Cortese dell'Alto Monferrato ..... 5
- Dolcetto d'Acqui ..... 6
- Gabiano ..... 7
- Grignolino del Monferrato Casalese ..... 8
- Monferrato ..... 9
- Piemonte\* ..... 10
- Rubino di Cantavenna ..... 11
- Strevi ..... 12

\* In the areas of: Alessandria, Asti, Cuneo.



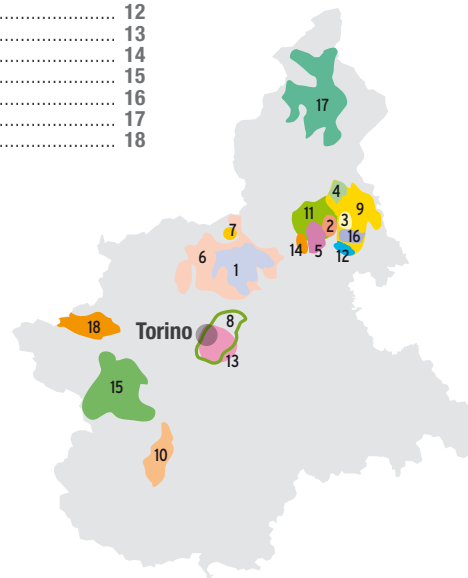
## PIEDMONT "NORTH"

### D.O.C.G.

- Erbaluce di Caluso or Caluso ..... 1
- Gattinara ..... 2
- Ghemme ..... 3

### D.O.C.

- Boca ..... 4
- Bramaterra ..... 5
- Canavese ..... 6
- Carema ..... 7
- Collina Torinese ..... 8
- Colline Novaresi ..... 9
- Colline Saluzzesi ..... 10
- Coste della Sesia ..... 11
- Fara ..... 12
- Freisa di Chieri ..... 13
- Lessona ..... 14
- Pinerolese ..... 15
- Sizzano ..... 16
- Valli Ossolane ..... 17
- Valsusa ..... 18



## LOMBARDY

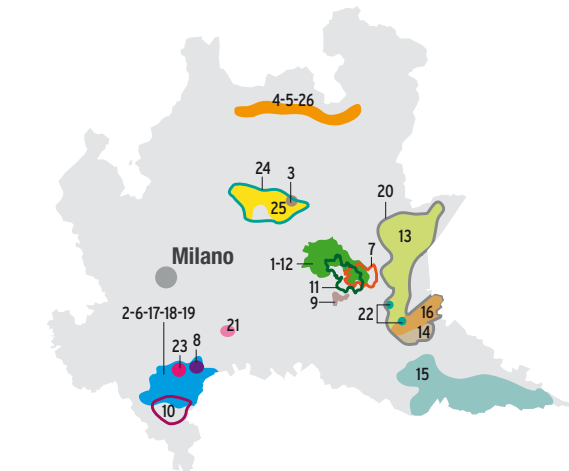
### D.O.C.G.

Franciacorta.....	1
Oltrepò Pavese Metodo Classico..	2
Scanzo or Moscato di Scanzo.....	3
Sforzato di Valtellina or Sfursat di Valtellina.....	4
Valtellina Superiore.....	5

### D.O.C.

Bonarda dell'Oltrepò Pavese.....	6
Botticino.....	7
Buttafuoco dell'Oltrepò Pavese or Buttafuoco.....	8
Capriano del Colle.....	9
Casteggio.....	10
Cellatica.....	11
Curtefranca.....	12
Garda.....	13

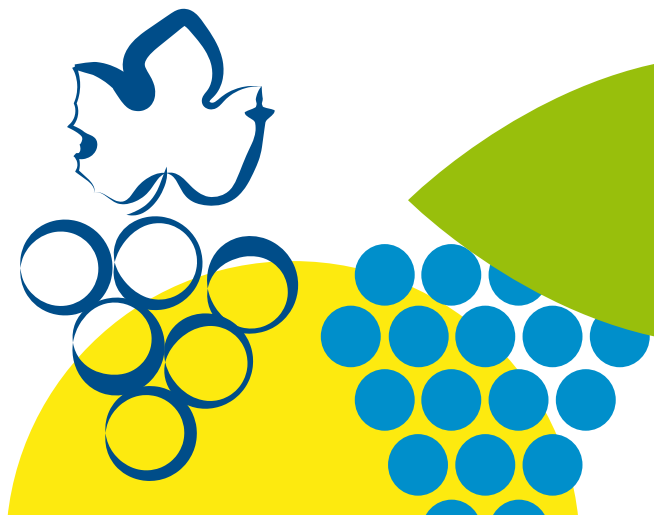
Garda Colli Mantovani.....	14
Lambrusco Mantovano.....	15
Lugana.....	16
Oltrepò Pavese.....	17
Oltrepò Pavese Pinot Grigio.....	18
Pinot Nero dell'Oltrepò Pavese..	19
Riviera del Garda Classico.....	20
San Colombano al Lambro or San Colombano.....	21
San Martino della Battaglia.....	22
Sangue di Giuda dell'Oltrepò Pavese or Sangue di Giuda.....	23
Terre di Colleoni or Colleoni.....	24
Valcalepio.....	25
Valtellina Rosso or Rosso di Valtellina.....	26



## AOSTA VALLEY

### D.O.C.

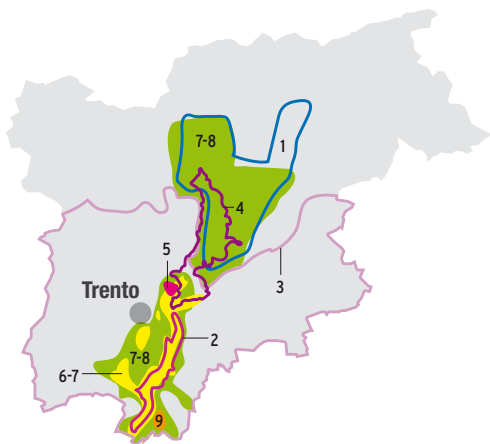
Valle d'Aosta or Valée d'Aoste.....	1
-------------------------------------	---



## TRENTINO-ALTO ADIGE

### D.O.C.

Alto Adige or dell'Alto Adige or Südtirol or Südtiroler.....	1
Casteller delle Venezie or Beneških Okolišev .....	2
Lago di Caldaro or Caldaro or Kalterersee or Kälterer .....	4
Teroldego Rotaliano .....	5
Trentino .....	6
Trento .....	7
Valdadige or Etschtaler .....	8
Valdadige Terradeiforti or Terradeiforti .....	9



## FRIULI VENEZIA GIULIA

### D.O.C.G.

Colli Orientali del Friuli Picolit .....	1
Lison .....	2
Ramandolo .....	3
Rosazzo .....	4

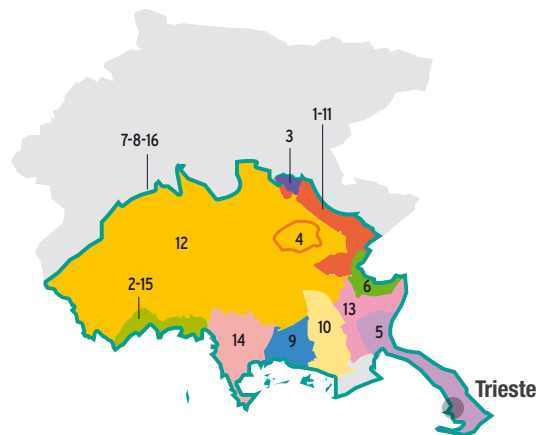
### D.O.C.

Carso or Carso-Kras .....	5
Collio Goriziano or Collio delle Venezie or Beneških Okolišev* .....	7
Friuli or Friuli Venezia Giulia* .....	8
Friuli Annia .....	9
Friuli Aquileia .....	10

Friuli Colli Orientali .....	11
Friuli Grave .....	12
Friuli Isonzo or Isonzo del Friuli .....	13
Friuli Latisana .....	14
Lison-Pramaggiore .....	15
Prosecco* .....	16

\* In the areas of: Pordenone, Udine, Gorizia, Trieste.

\* At 12 March 2018 this denomination of origin is subject to transient labeling regime, until the end of the approval procedure by the E.U.



# VENETO

## D.O.C.G.

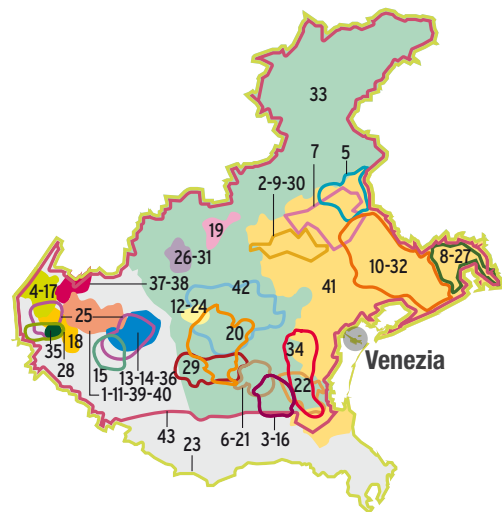
Amarone della Valpolicella.....	1
Asolo Prosecco or Asolo .....	2
Bagnoli Friularo .....	3
or Friularo di Bagnoli .....	3
Bardolino Superiore .....	4
Colli di Conegliano.....	5
Colli Euganei Fior d'Arancio .....	6
or Fior d'Arancio Colli Euganei....	6
Conegliano Valdobbiadene-Prosecco .....	7
or Conegliano-Prosecco .....	7
or Valdobbiadene Prosecco .....	7
Lison.....	8
Montello Rosso or Montello .....	9
Piave Malanotte .....	10
or Malanotte del Piave .....	10
Recioto della Valpolicella.....	11
Recioto di Gambellara.....	12
Recioto di Soave.....	13
Soave Superiore.....	14

Prosecco*.....	33
Riviera del Brenta .....	34
San Martino della Battaglia .....	35
Soave.....	36
Valdadige or Etschtaler .....	37
Valdadige Terradeiforti .....	38
or Terradeiforti .....	38
Valpolicella .....	39
Valpolicella Ripasso .....	40
Venezia .....	41
Vicenza .....	42
Vigneti della Serenissima .....	43
or Serenissima** .....	43

\* In the areas of: Belluno, Padova, Treviso, Vicenza, Venezia.

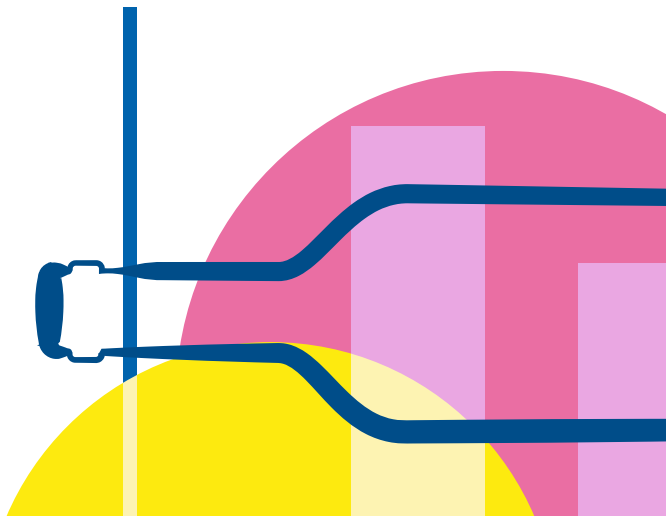
\*\* In the areas of: Belluno, Padova, Treviso, Vicenza, Verona.

\*\*\* In the areas of: Belluno, Padova, Treviso, Venezia, Verona, Vicenza, Rovigo.



## D.O.C.

Arcole .....	15
Bagnoli di Sopra or Bagnoli .....	16
Bardolino .....	17
Bianco di Custoza or Custoza .....	18
Breganze .....	19
Colli Berici .....	20
Colli Euganei.....	21
Corti Benedettine .....	22
del Padovano .....	22
delle Venezie or Beneških .....	23
Okolišev*** .....	23
Gambellara .....	24
Garda.....	25
Lessini Durello or Durello Lessini .....	26
Lison-Pramaggiore .....	27
Lugana .....	28
Merlara .....	29
Montello Asolo o Asolo Montello .....	30
Monti Lessini .....	31
Piave.....	32



## EMILIA ROMAGNA

### D.O.C.G.

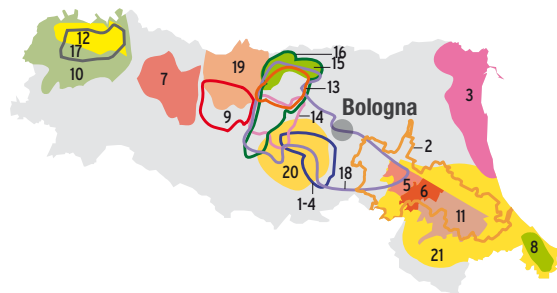
Colli Bolognesi Pignoletto*	1
Romagna Albana	2

### D.O.C.

Bosco Eliceo	3
Colli Bolognesi	4
Colli d'Imola	5
Colli di Faenza	6
Colli di Parma	7
Colli di Rimini	8
Colli di Scandiano e di Canossa	9
Colli Piacentini	10
Colli Romagna Centrale	11
Gutturino	12
Lambrusco di Sorbara	13

Lambrusco Grasparossa di Castelvetro	14
Lambrusco Salamino di Santa Croce	15
Modena or Di Modena	16
Ortrugo dei Colli Piacentini or Ortrugo-Colli Piacentini	17
Pignoletto*	18
Reggiano	19
Reno	20
Romagna	21

\* At 12 March 2018 this denomination of origin is subject to transient labeling regime, until the end of the approval procedure by the E.U.



## LIGURIA

### D.O.C.

Cinque Terre e Cinque Terre Sciacchetrà	1
Colli di Luni	2
Colline di Levante	3
Dolceacqua or Rossese di Dolceacqua	4
Golfo del Tigullio-Portofino or Portofino	5
Pornassio or Ormeasco di Pornassio	6
Riviera Ligure di Ponente	7
Val Polcèvera	8





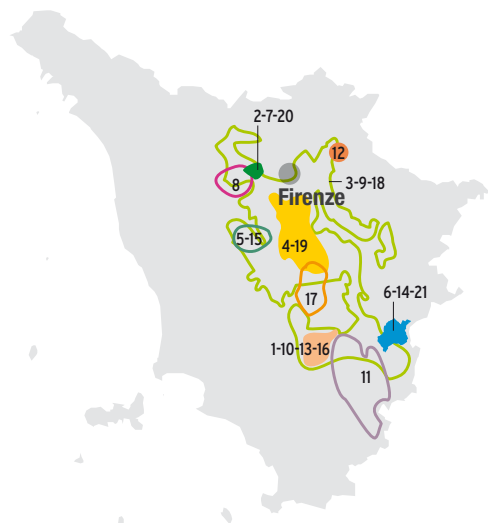
## TUSCANY "ANTIQUE HEART"

### D.O.C.G.

Brunello di Montalcino .....	1	Orcia .....	11
Carmignano .....	2	Pomino .....	12
Chianti .....	3	Rosso di Montalcino .....	13
Chianti Classico .....	4	Rosso di Montepulciano .....	14
Vernaccia di San Gimignano .....	5	San Gimignano .....	15
Vino Nobile di Montepulciano .....	6	Sant'Antimo .....	16

### D.O.C.

Barco Reale di Carmignano .....	7	Val d'Arbia .....	17
Bianco dell'Empolese .....	8	Vin Santo del Chianti .....	18
Colli dell'Etruria Centrale .....	9	Vin Santo del Chianti Classico ...	19
Moscadello di Montalcino .....	10	Vin Santo di Carmignano .....	20
		Vin Santo di Montepulciano .....	21



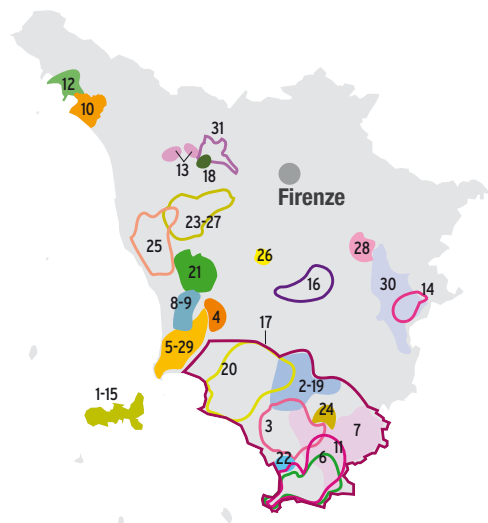
## TUSCANY

### D.O.C.G.

Elba Aleatico Passito		Elba .....	15
or Aleatico Passito dell'Elba .....	1	Grance Senesi .....	16
Montecucco Sangiovese .....	2	Maremma Toscana .....	17
Morellino di Scansano .....	3	Montecarlo .....	18
Suvereto .....	4	Montecucco .....	19
Val di Cornia Rosso		Monteregio	
or Rosso della Val di Cornia .....	5	Val di Massa Marittima .....	20

### D.O.C.

Ansonica Costa dell'Argentario .....	6	Montescudaio .....	21
Bianco di Pitigliano .....	7	Parrina .....	22
Bolgheri .....	8	San Torpè .....	23
Bolgheri Sassicaia .....	9	Sovana .....	24
Candia dei Colli Apuani .....	10	Terratico di Bibbona .....	25
Capalbio .....	11	Terre di Casole .....	26
Colli di Luni .....	12	Terre di Pisa .....	27
Colline Lucchesi .....	13	Val d'Arno di Sopra	
Cortona .....	14	or Valdarno di Sopra .....	28
		Val di Cornia .....	29
		Valdichiana Toscana .....	30
		Valdinievole .....	31

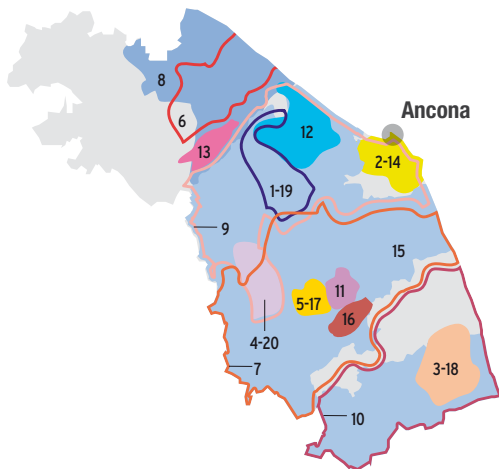


## MARCHES

### D.O.C.G.

Castelli di Jesi	10
Verdicchio Riserva	11
Cònero	12
Offida	13
Verdicchio di Matelica Riserva	14
Vernaccia di Serrapetrona	15
<b>D.O.C.</b>	
Bianchello del Metauro	16
Colli Maceratesi	17
Colli Pesaresi	18
Esino	19

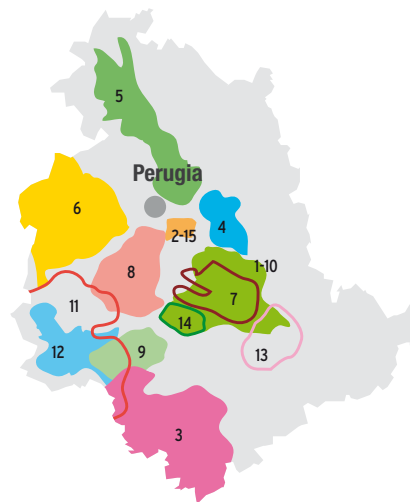
Falerio	10
I Terreni di Sanseverino	11
Lacrima di Morro	12
or Lacrima di Morro d'Alba	13
Pergola	14
Rosso Cònero	15
Rosso Piceno or Piceno	16
San Ginesio	17
Serrapetrona	18
Terre di Offida	19
Verdicchio dei Castelli di Jesi	20
Verdicchio di Matelica	20



## UMBRIA

### D.O.C.G.

Montefalco Sagrantino	7
Torgiano Rosso Riserva	8
<b>D.O.C.</b>	
Amelia	9
Assisi	10
Colli Altotiberini	11
Colli del Trasimeno	12
or Trasimeno	13
Colli Martani	7
Colli Perugini	8
Lago di Corbara	9
Montefalco	10
Orvieto	11
Rosso Orvietano	12
or Orvietano Rosso	13
Spoletto	14
Todi	15
Torgiano	15



## LATIUM

### D.O.C.G.

Cannellino di Frascati .....	1
Cesanese del Piglio or Piglio.....	2
Frascati Superiore .....	3

### D.O.C.

Aleatico di Gradoli .....	4
Aprilia .....	5
Atina .....	6
Bianco Capena .....	7
Castelli Romani .....	8
Cerveteri .....	9
Cesanese di Affile or Affile.....	10
Cesanese di Olevano Romano or Olevano Romano.....	11
Circeo .....	12
Colli Albani.....	13
Colli della Sabina.....	14
Colli Etruschi Viterbesi or Tuscia.....	15

Colli Lanuvini .....	16
Cori.....	17
Est! Est!! Est!!! di Montefiascone.....	18
Frascati .....	19
Genazzano.....	20
Marino.....	21
Montecompatri Colonna or Montecompatri or Colonna ....	22
Nettuno .....	23
Orvieto .....	24
Roma .....	25
Tarquinia .....	26
Terracina or Moscato di Terracina.....	27
Velletri.....	28
Vignanello.....	29
Zagarolo.....	30

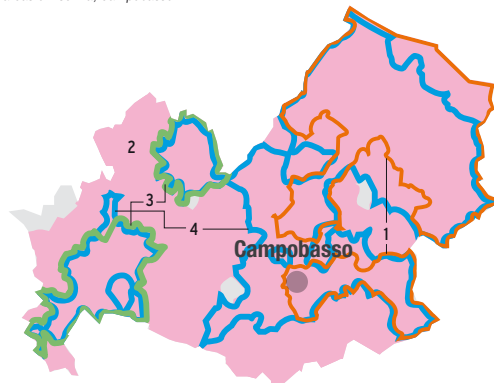


## MOLISE

### D.O.C.

Biferno .....	1
Molise or del Molise .....	2
Pentro d'Isernia or Pentro .....	3
Tintilia del Molise* .....	4

\* In the areas of: Isernia, Campobasso.



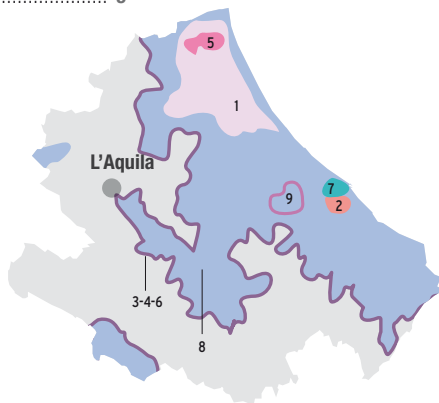
## ABRUZZO

### D.O.C.G.

Montepulciano d'Abruzzo	
Colline Teramane	1
Terre Tollesi or Tullum	2

### D.O.C.

Abruzzo	3
Cerasuolo d'Abruzzo	4
Controguerra	5
Montepulciano d'Abruzzo	6
Ortona	7
Trebbiano d'Abruzzo	8
Villamagna	9



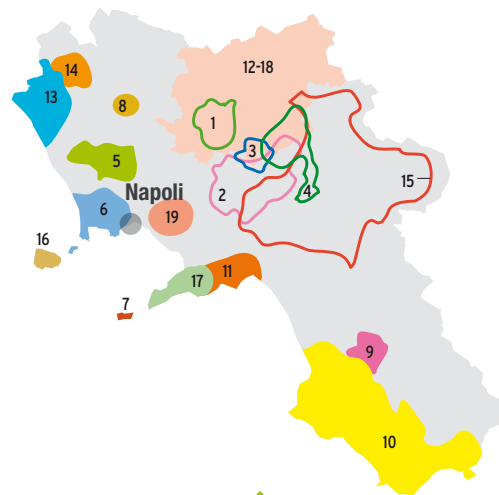
## CAMPANIA

### D.O.C.G.

Aglianico del Taburno	1	Castel San Lorenzo	9
Fiano di Avellino	2	Cilento	10
Greco di Tufo	3	Costa d'Amalfi	11
Taurasi	4	Falanghina del Sannio	12
		Falerno del Massico	13
		Galluccio	14

### D.O.C.

Aversa	5	Irpinia	15
Campi Flegrei	6	Ischia	16
Capri	7	Penisola Sorrentina	17
Casavecchia di Pontelatone	8	Sannio	18
		Vesuvio	19



## BASILICATA

### D.O.C.G.

Aglianico del Vulture Superiore .... 1

### D.O.C.

Aglianico del Vulture ..... 2  
 Grotтино di Roccanova ..... 3  
 Matera ..... 4  
 Terre dell'Alta Val d'Agri ..... 5



## APULIA

### D.O.C.G.

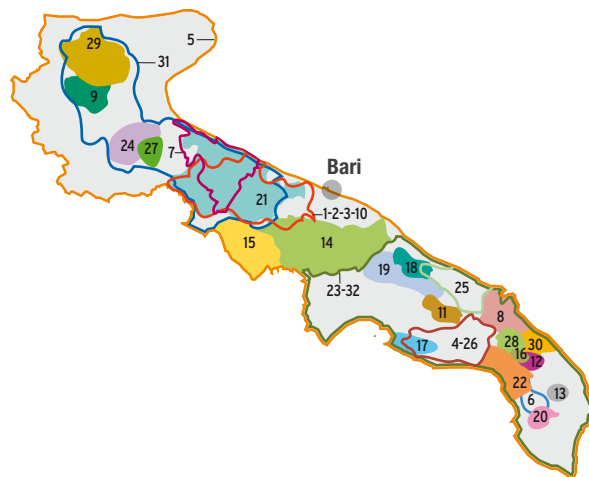
Castel del Monte Bombino Nero... 1  
 Castel del Monte ..... 2  
 Nero di Troia Riserva ..... 2  
 Castel del Monte Rosso Riserva... 3  
 Primitivo di Manduria ..... 4  
 Dolce Naturale ..... 4

### D.O.C.

Aleatico di Puglia\* ..... 5  
 Alezio ..... 6  
 Barletta ..... 7  
 Brindisi ..... 8  
 Cacc'è mmitte di Lucera ..... 9  
 Castel del Monte ..... 10  
 Colline Joniche Tarantine ..... 11  
 Copertino ..... 12  
 Galatina ..... 13  
 Gioia del Colle ..... 14  
 Gravina ..... 15

Leverano ..... 16  
 Lizzano ..... 17  
 Locorotondo ..... 18  
 Martina or Martina Franca ..... 19  
 Matino ..... 20  
 Moscato di Trani ..... 21  
 Nardò ..... 22  
 Negroamaro di Terra d'Otranto .. 23  
 Orta Nova ..... 24  
 Ostuni ..... 25  
 Primitivo di Manduria ..... 26  
 Rosso di Cerignola ..... 27  
 Salice Salentino ..... 28  
 San Severo ..... 29  
 Squinzano ..... 30  
 Tavoliere delle Puglie  
 or Tavoliere ..... 31  
 Terra d'Otranto ..... 32

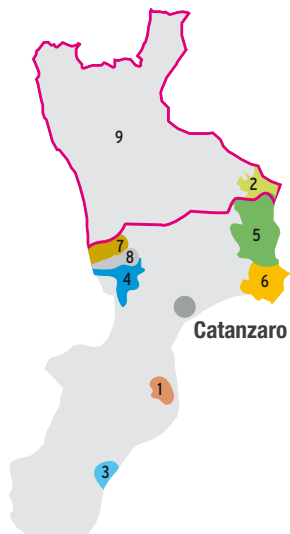
\* In all the areas of the region.



## CALABRIA

### D.O.C.

Bivongi .....	1
Cirò .....	2
Greco di Bianco .....	3
Lamezia .....	4
Melissa .....	5
S. Anna di Isola Capo Rizzuto .....	6
Savuto .....	7
Scavigna .....	8
Terre di Cosenza .....	9



Catanzaro

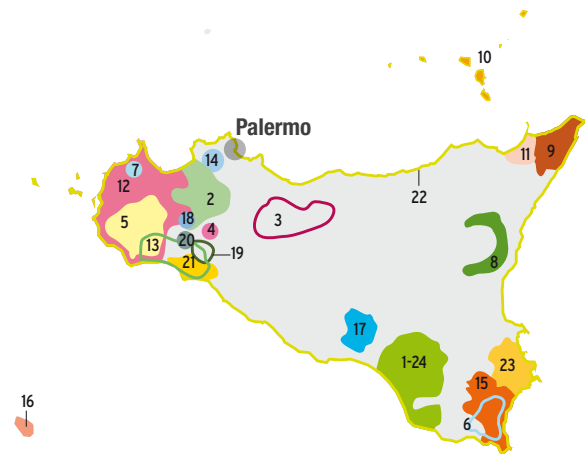
## SICILY

### D.O.C.G.

Cerasuolo di Vittoria .....	1
Alcamo .....	2
Contea di Sclafani or Valledolmo - Contea di Sclafani ...	3
Contessa Entellina .....	4
Delia Nivolelli .....	5
Eloro .....	6
Erice .....	7
Etna .....	8
Faro .....	9
Malvasia delle Lipari .....	10
Mamertino di Milazzo or Mamertino .....	11

Marsala .....	12
Menfi .....	13
Monreale .....	14
Noto .....	15
Pantelleria .....	16
Riesi .....	17
Salaparuta .....	18
Sambuca di Sicilia .....	19
Santa Margherita di Belice .....	20
Sciaccia .....	21
Sicilia* .....	22
Siracusa .....	23
Vittoria .....	24

\* In all the areas of the region.



Palermo

# SARDINIA

## D.O.C.G.

Vermentino di Gallura ..... 1

## D.O.C.

Alghero ..... 2

Arborea ..... 3

Cagliari ..... 4

Campidano di Terralba  
or Terralba ..... 5

Cannonau di Sardegna\* ..... 6

Carignano del Sulcis ..... 7

Girò di Cagliari ..... 8

Malvasia di Bosa ..... 9

Mandrolisai ..... 10

Monica di Sardegna\* ..... 11

Moscato di Sardegna\* ..... 12

Moscato di Sorso-Sennori  
or Moscato di Sorso

or Moscato di Sennori ..... 13

Nasco di Cagliari ..... 14

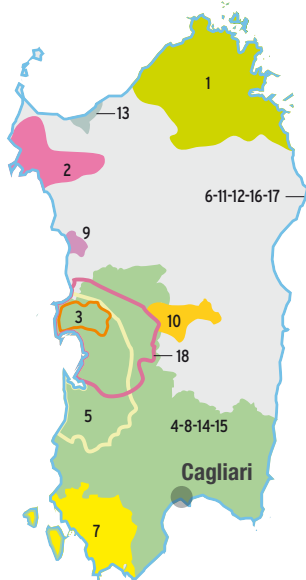
Nuragus di Cagliari ..... 15

Sardegna Semidano\* ..... 16

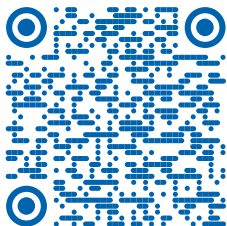
Vermentino di Sardegna\* ..... 17

Vernaccia di Oristano ..... 18

\* In all the areas of the region.



**WOULD YOU LIKE  
TO DISCOVER ALL THE MAPS  
OF ITALIAN DESIGNATION  
OF ORIGIN WINES?**



**Scan the QR Codes to find out more!**



**WATCH THE NEW  
VIDEO ADS!**



FEDER  DOC

---

CONFEDERAZIONE NAZIONALE DEI CONSORZI VOLONTARI  
PER LA TUTELA DELLE DENOMINAZIONI DEI VINI ITALIANI

---

FEDERDOC.COM



A CAMPAIGN FINANCED ACCORDING TO EU REGULATION N. 1308/2013